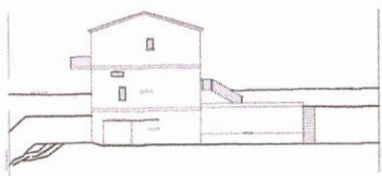
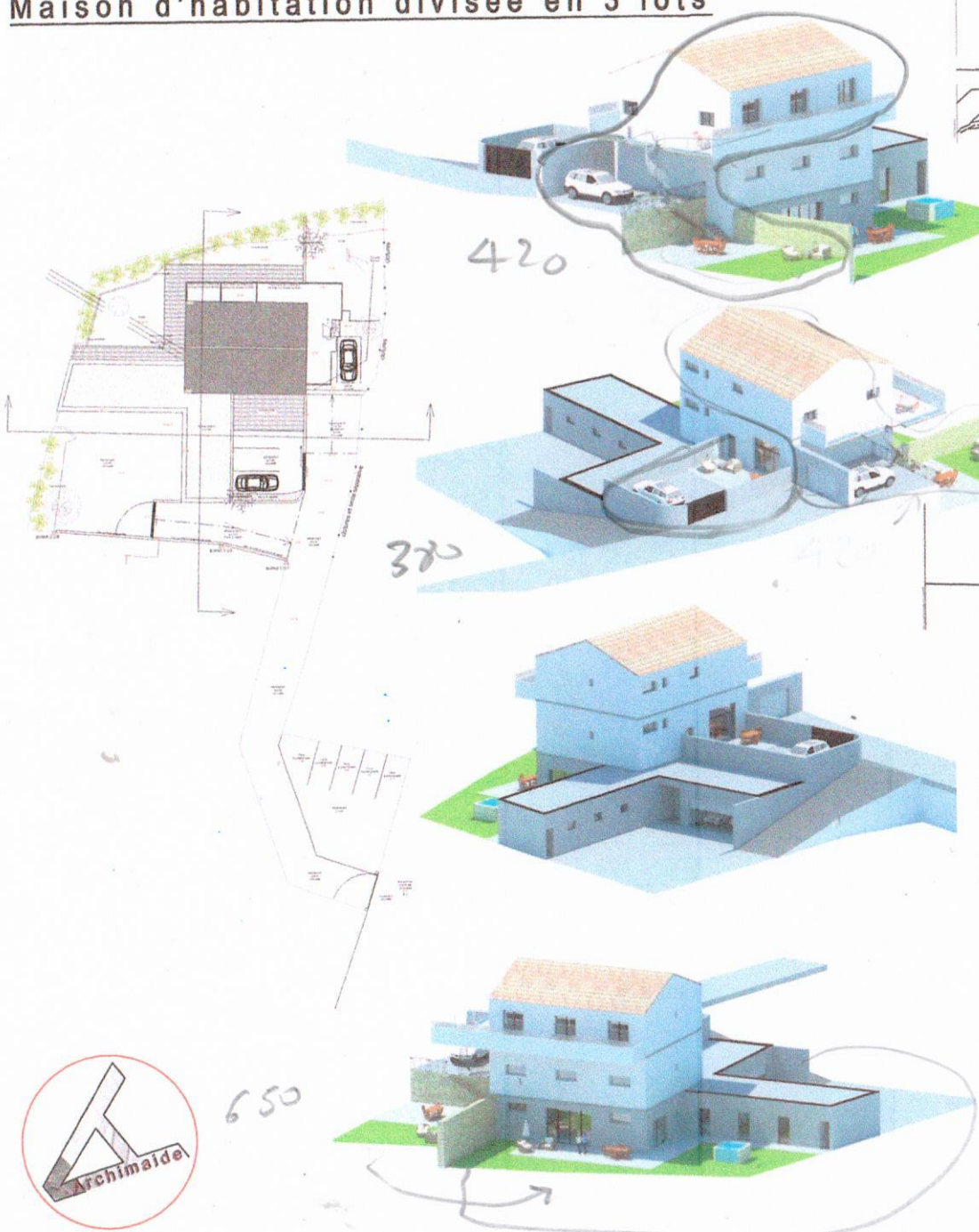


Villeneuve lez Avignon
Maison d'habitation divisée en 3 lots



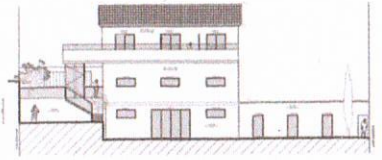
**Façade Nord
Existante**



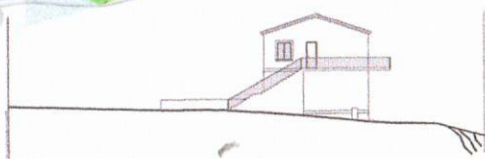
**Façade Nord
Future**



**Façade EST
Existante**



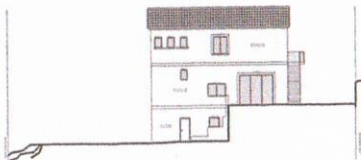
**Façade EST
Future**



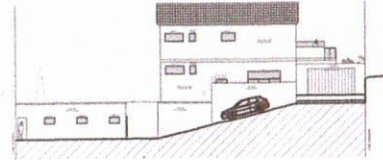
**Façade SUD
Existante**



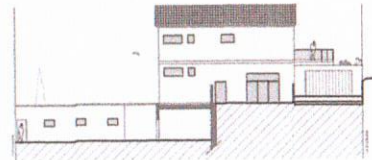
**Façade SUD
Future**



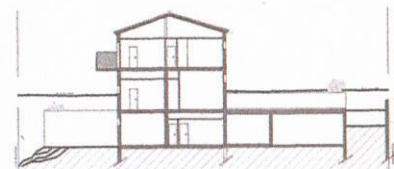
**Façade OUEST
Existante**



**Façade OUEST
Future**



Coupe future A-A'



Coupe future B-B'

Villeneuve lez Avignon

Lot 1 :

Superficie à titre indicatif

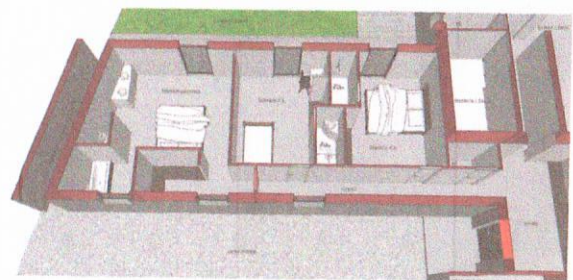
176m² d'habitation

36m² garage

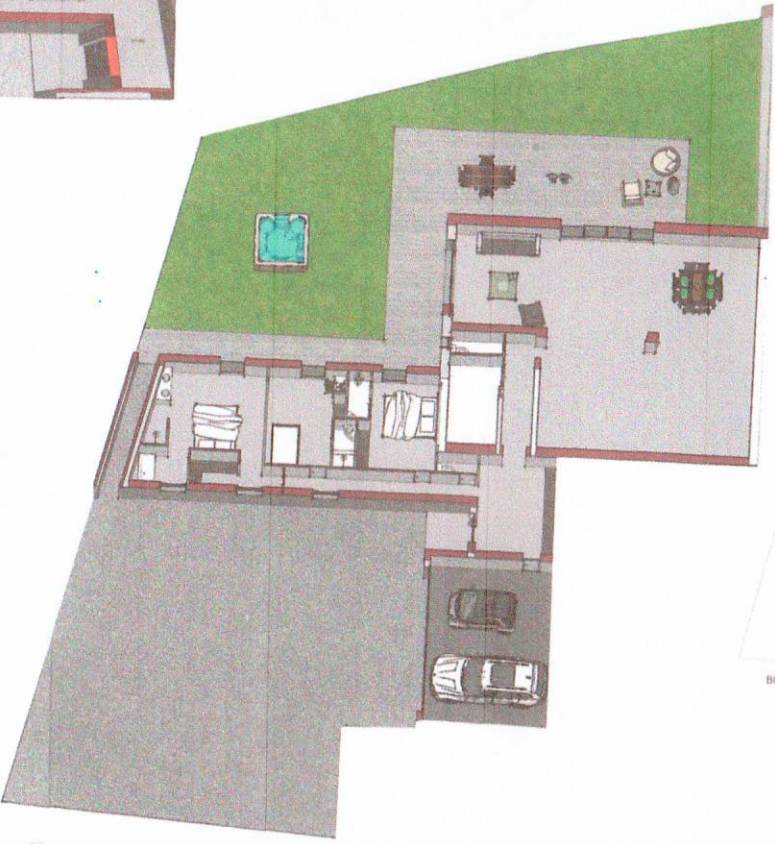
442m² de jardin

Superficie commun et accès

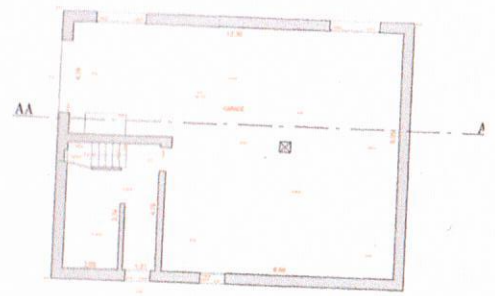
488m² en commun



650



Plan actuel



Plan futur

